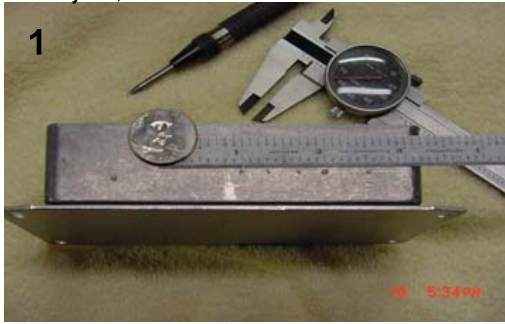


Project Box Mechanical 1 - 10

DB9 layout, mount holes 1 inch on center



KF6HHS
03/10/06

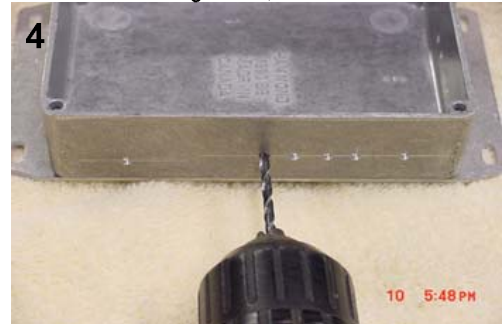
Computer, TT 3 and DPDT Sw 0.7 inch from top of box



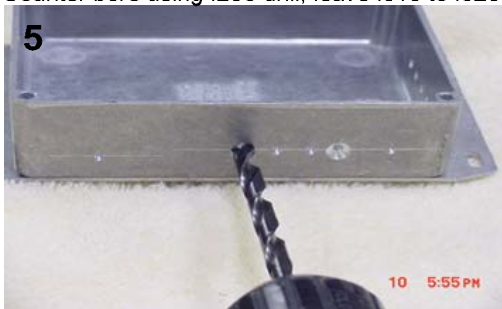
GPS Rx 0.8 inch from top of box



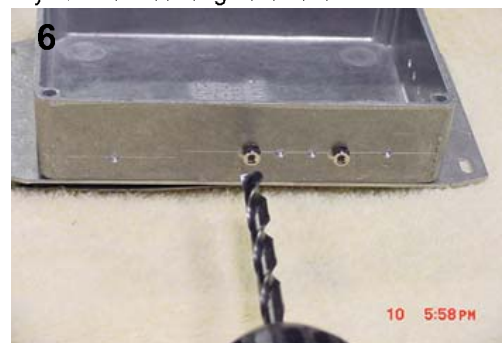
Drill DB9 mounting holes, drill size .110 to .125



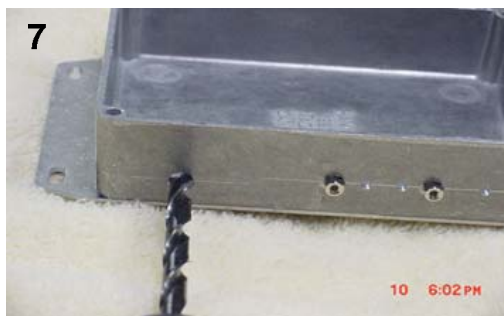
Counter bore using .250 drill, leave .010 to .020 thickness



Dry fit DB9 mounting hardware



----- Drill GPS and DPDT Program/Operate switch holes using .250 inch drill -----



Dry fit GPS Rx and switch, then remove



DB9 cutout, drill two .375 inch (or smaller) holes

